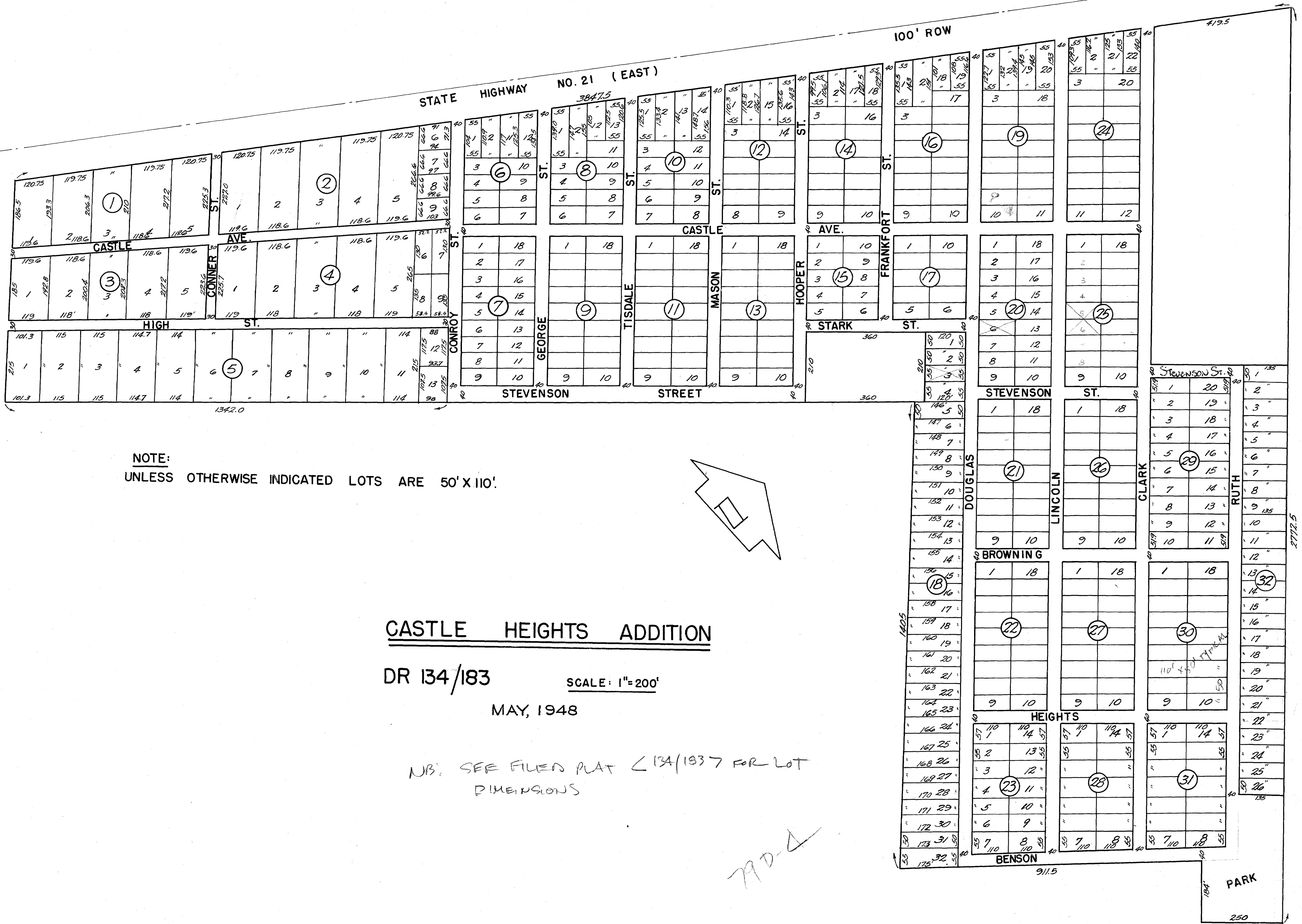


on base
4/14/2000



NOTE:
UNLESS OTHERWISE INDICATED LOTS ARE 50' X 110'

CASTLE HEIGHTS ADDITION

DR 134/183

SCALE: 1"=200'

MAY, 1948

NB: SEE FILED PLAT < 134/183 > FOR LOT
DIMENSIONS

790-4